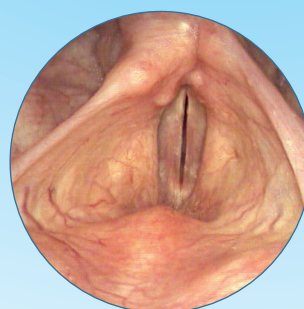
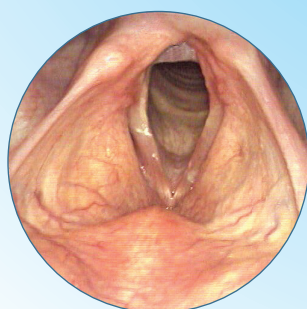


Fine-Line Laryngoscopes

Brilliant high magnification image and exceptional image brightness for an optimal result.



- High-quality, anti-reflective optical system
- Superb optical transmission
- Excellent depth of field
- Highly refractive glass for optimal colour rendering even when the image is magnified
- High-performance illumination fibers
- Patient-friendly small Diameter of 6 mm with high magnification image












- **620862 HIGH MAGNIFICATION**

Diameter: 6.0 mm, Direction of view: 70°,
Field of view: 12,3° HM, Angle of view: 53°,
Working length: approx. 160 mm, autoclavable

- **620861 STANDARD MAGNIFICATION**

same, Field of view: 10,5°

 18 min  134°C		NEW! 	NEW! 		
	Item Number	850170	620861	620862	621070
Diameter	4 mm Ø	6 mm Ø	6 mm Ø	10 mm Ø	10 mm Ø
Direction of view	70 °	70 °	70 °	70 °	90 °
Working Length	180 mm	160 mm	160 mm	160 mm	160 mm
Soakable	YES	YES	YES	YES	YES
Autoklavable	YES	YES	YES	YES	YES

		
Item number	620070	620090
Diameter	10 mm Ø	10 mm Ø
Direction of view	70 °	90 °
Working Length	160 mm	160 mm
Soakable	YES	YES
Autoklavable	NO	NO

MOUNTING FOR RIGID ENDOSCOPES AND ENDOSCOPIC-ACCESSORIES

- Storage and disinfection of endoscopes with working length up to 200 mm
- Steel panel, powder-coated, with 2 screw coupler
- Light Grey (RAL 7035)
- Tubulars (glass), Ø 30 x 200 mm, autoclavable
- Dimensions (W x D) 120 mm x 140 mm
- Item Number: 800604



For more information call
 +49 (0) 7462-9458-0
 or visit us at:
www.gyrusacmi.com
www.gyrusacmi.de

Manufactured for:
 Gyrus ENT, L.L.C.
 2925 Appling Road
 Bartlett, TN 38133
 TEL 901-373-0200
 FAX 800-757-2942

USA

Gyrus ACMI L.P.
 6655 Wedgwood Rd, Ste 160
 Maple Grove MN 55311
 TEL 763-416-3000
 FAX 763-463-1200

Canada

ACMI Canada, Inc.
 200 Bond Street West, Unit 104
 Oshawa, Ontario L1J 2L7
 Canada
 TEL +1 (905) 432-9802
 FAX +1 (905) 571-4044

UK

Gyrus International Ltd.
 410 Wharfedale Road
 Winnersh Triangle
 Berkshire RG41 5RA
 United Kingdom
 TEL +44 (0) 1189-219700
 FAX +44 (0) 1189-219800

Australasia

Gyrus Australasia Pty Ltd
 200 Lorimier Street
 Port Melbourne
 Victoria 3207
 Australasia
 TEL +61 (0) 3-9279-7600
 FAX +61 (0) 3-9279-7699

The Netherlands

Gyrus Medical BV
 Laan van Overvliet 7
 3461 HE Linschoten
 TEL +31 (0) 348-415-184
 FAX +31 (0) 348-422-064

Germany

Gyrus Medical GmbH
 Gotenstrasse 3
 D-78532 Tuttlingen
 Postfach 280
 D-78503 Tuttlingen
 TEL +49 (0) 7462-9458-0
 FAX +49 (0) 7462-9458-99